



**India Meteorological Department  
(Ministry of Earth Sciences)**

**NATIONAL BULLETIN NO. 04 (AS/02/2024)**

**TIME OF ISSUE: 1330 HOURS IST**

**DATED: 14.10.2024**

**FROM: INDIA METEOROLOGICAL DEPARTMENT**

**(FAX NO. 24643965/24699216/24623220)**

**TO: CONTROL ROOM, NDM, MINISTRY OF HOME AFFAIRS (FAX.NO. 23093750)  
CONTROL ROOM NDMA (FAX.NO. 26701729)  
CABINET SECRETARIAT (FAX.NO.23012284, 23018638)  
PS TO HON'BLE MINISTER FOR S & T AND EARTH SCIENCES (FAX NO.23316745)  
SECRETARY, MOES (FAX NO. 24629777)  
H.Q. (INTEGRATED DEFENCE STAFF AND CDS) (FAX NO. 23005137/23005147)  
DIRECTOR GENERAL, DOORDARSHAN (23385843)  
DIRECTOR GENERAL, AIR (23421105, 23421219)  
PIB MOES (FAX NO. 23389042)  
UNI (FAX NO. 23355841)  
D.G. NATIONAL DISASTER RESPONSE FORCE (NDRF) (FAX NO. 26105912, 2436 3260)  
DIRECTOR, PUNCTUALITY, INDIAN RAILWAYS (FAX NO. 23388503)  
CHIEF SECRETARY, MAHARASHTRA (FAX NO. 022- 22028594)  
CHIEF SECRETARY, GUJARAT (FAX NO. 079-23250305)  
CHIEF SECRETARY, DAMAN & DIU (FAX NO. 0260-2230775)  
CHIEF SECRETARY, DADRA & NAGAR HAVELI (FAX NO. 0260-2645466)  
CHIEF SECRETARY, GOA (FAX NO. 0832-2415201)  
CHIEF SECRETARY, KARNATAKA (FAX NO. 080-22258913)  
CHIEF SECRETARY, KERALA (FAX NO. 0471-2327176)  
CHIEF SECRETARY, LAKSHADWEEP (FAX NO. 04896-268124)  
CHIEF SECRETARY, TAMIL NADU (FAX NO. 044-25672304)  
CHIEF SECRETARY, ANDHRA PRADESH (FAX NO. 0863-2441029)  
CHIEF SECRETARY, PUDUCHERRY (FAX NO. 0413-2334145)**

**Sub: (A) Depression over central Arabian Sea and (B) Low Pressure Area over southeast Bay of Bengal**

**(A) Depression over central Arabian Sea**

The Depression over central Arabian sea moved slowly west-northwestwards with a speed of 4 kmph during past 6 hours, and lay centred at 0830 hours IST of today, the 14th October, 2024 over the same region near latitude 15.8°N and longitude 64.3°E, about 790 km southeast of Masirah (Oman), 1100 km east of Salalah (Oman) and 1310 km east of Al Ghaidah (Yemen).

It is likely to move west-northwestwards towards Oman coast and weaken gradually into a well-marked low pressure area during next 24 hours.

**Warnings:**

**(i) Wind warning:**

- Squally wind speed reaching 40-50 kmph gusting to 60 kmph is likely to prevail over central parts of Arabian Sea till 14<sup>th</sup> October evening and decrease gradually thereafter.

- Squally wind speed reaching 35-45 kmph gusting to 55 kmph is likely to prevail over adjoining central parts of north Arabian Sea till 14<sup>th</sup> October evening and decrease gradually thereafter.
- Squally wind speed reaching 35-45 kmph gusting to 55 kmph is likely to prevail over westcentral Arabian Sea from 14<sup>th</sup> night till 16<sup>th</sup> morning and decrease gradually thereafter.

**(ii) Sea condition:**

- Rough sea conditions is likely to prevail over central parts of Arabian Sea till 14<sup>th</sup> evening and improve thereafter.
- Rough sea condition is likely over central parts of north Arabian Sea till 14<sup>th</sup> evening.
- Rough sea condition is likely to prevail only over westcentral Arabian Sea from 14<sup>th</sup> night to 16<sup>th</sup> October morning.

**(iii) Fishermen warning:**

Fishermen are advised not venture into

- Central and adjoining north Arabian Sea till evening of 14<sup>th</sup> October.
- Westcentral Arabian Sea till morning of 16<sup>th</sup> October.

❖ **Impact Expected over Sea area**

- Reduction of visibility over sea area due to sea spray induced by strong wind and heavy rainfall.
- Impact expected for boats, motor boats, smaller ships and trawler used for fishing and other purposes.

❖ **Action Suggested**

Fishermen are advised not venture into

- Central and adjoining north Arabian Sea till evening of 14<sup>th</sup> October.
- Westcentral Arabian Sea till morning of 16<sup>th</sup> October.

**(B) Low Pressure Area over southeast Bay of Bengal**

The low pressure area over southeast Bay of Bengal persisted over the same region at 0830 hrs IST of today, the 14th October 2024.

It is likely to move west-northwestwards and become well marked low pressure area over central parts of south Bay of Bengal by 15th October. Thereafter, it is likely to continue to move west-northwestwards towards north Tamil Nadu, Puducherry and adjoining south Andhra Pradesh coasts during subsequent 2 days.

**Warnings:**

**(i) Rainfall Warning:**

**Tamil Nadu & Puducherry:** Light to moderate rainfall over most places with heavy to very heavy rainfall at isolated places is very likely on 14<sup>th</sup> & 15<sup>th</sup> and heavy to very heavy rainfall at a few places over Tamil Nadu & Puducherry with extremely heavy rainfall at isolated places over north Tamil Nadu is likely on 16<sup>th</sup> October.

Light to moderate rainfall over most places with heavy to very heavy rainfall at isolated places is very likely over interior Tamil Nadu on 17<sup>th</sup> October.

**South Andhra Pradesh & Rayalaseema:** Light to moderate rainfall over most places heavy to very heavy rainfall at a few places is very likely on 14<sup>th</sup>; heavy to very heavy rainfall at isolated places on 15<sup>th</sup> & 17<sup>th</sup> and heavy to extremely heavy rainfall at isolated places is very likely on 16<sup>th</sup> October.

**Kerala & south Interior Karnataka:** Light to moderate rainfall over most places with heavy to very heavy rainfall at isolated places is likely over Kerala and south Interior Karnataka on 16<sup>th</sup> & 17<sup>th</sup> October.

## **(ii) Wind Warning:**

Squally weather with wind speed reaching 35-45 kmph gusting 55 kmph is likely to prevail over southeast and adjoining southwest & central Bay of Bengal till 15<sup>th</sup> evening. Thereafter, it is likely to increase becoming squally wind speed reaching 40-50 kmph gusting to 60 kmph over southwest and adjoining westcentral Bay of Bengal and along & off Tamil Nadu, Puducherry and south Andhra Pradesh coasts till morning of 17<sup>th</sup> October and decrease gradually thereafter.

## **(iii) Sea Condition:**

Moderate to Rough Sea condition is likely to prevail over southeast and adjoining southwest & central Bay of Bengal till 15<sup>th</sup> evening. It is likely to become Rough Sea condition thereafter over southwest & adjoining westcentral Bay of Bengal and along & off Tamil Nadu, Puducherry and south Andhra Pradesh coasts till morning of 17<sup>th</sup> October and improve gradually thereafter.

## **(iv) Fishermen Warning:**

Fishermen are advised not to venture into

- Southeast and adjoining central Bay of Bengal during 14<sup>th</sup> to 15<sup>th</sup> October.
- Southwest and adjoining westcentral Bay of Bengal from 15<sup>th</sup> to 17<sup>th</sup> October.
- Fishermen out at sea are advised to return to coasts by today, the 14<sup>th</sup> October.

## **❖ Impact Expected [Tamil Nadu (including Chennai) and Andhra Pradesh due to heavy rainfall]**

- Localized Flooding of roads, water logging in low lying areas and closure of underpasses mainly in urban areas of the above region.
- Occasional reduction in visibility due to heavy rainfall.
- Disruption of traffic in major cities and roadways due to water logging in roads and poor visibility due to heavy rain leading to increased travel time and incidents
- Likely disruption of marine and inland water transportation like small boats and trawlers.
- Minor damage to kutcha roads.
- Possibilities of damage to vulnerable structure.
- Localized Landslides/Mudslides/landslips/mud slips/land sinks/mud sinks.
- Damage to horticulture and standing crops in some areas due to inundation and wind.
- It may lead to riverine flooding in some river catchments (for riverine flooding please visit Web page of CWC)

## **❖ Action Suggested [Tamil Nadu and Andhra Pradesh due to heavy rainfall]**

- Judicious regulation of surface transports including railways and roadways and onshore/offshore activities.
- Check for traffic congestion on your route before leaving for your destination.
- Follow any traffic advisories that are issued in this regard.
- Avoid going to areas that face the water logging problems often.
- Avoid staying in vulnerable structure.

## **Agromet advisories for Heavy Rainfall**

- Provide mechanical support to horticultural crops & staking to vegetables.
- Keep the harvested produce at safer place.

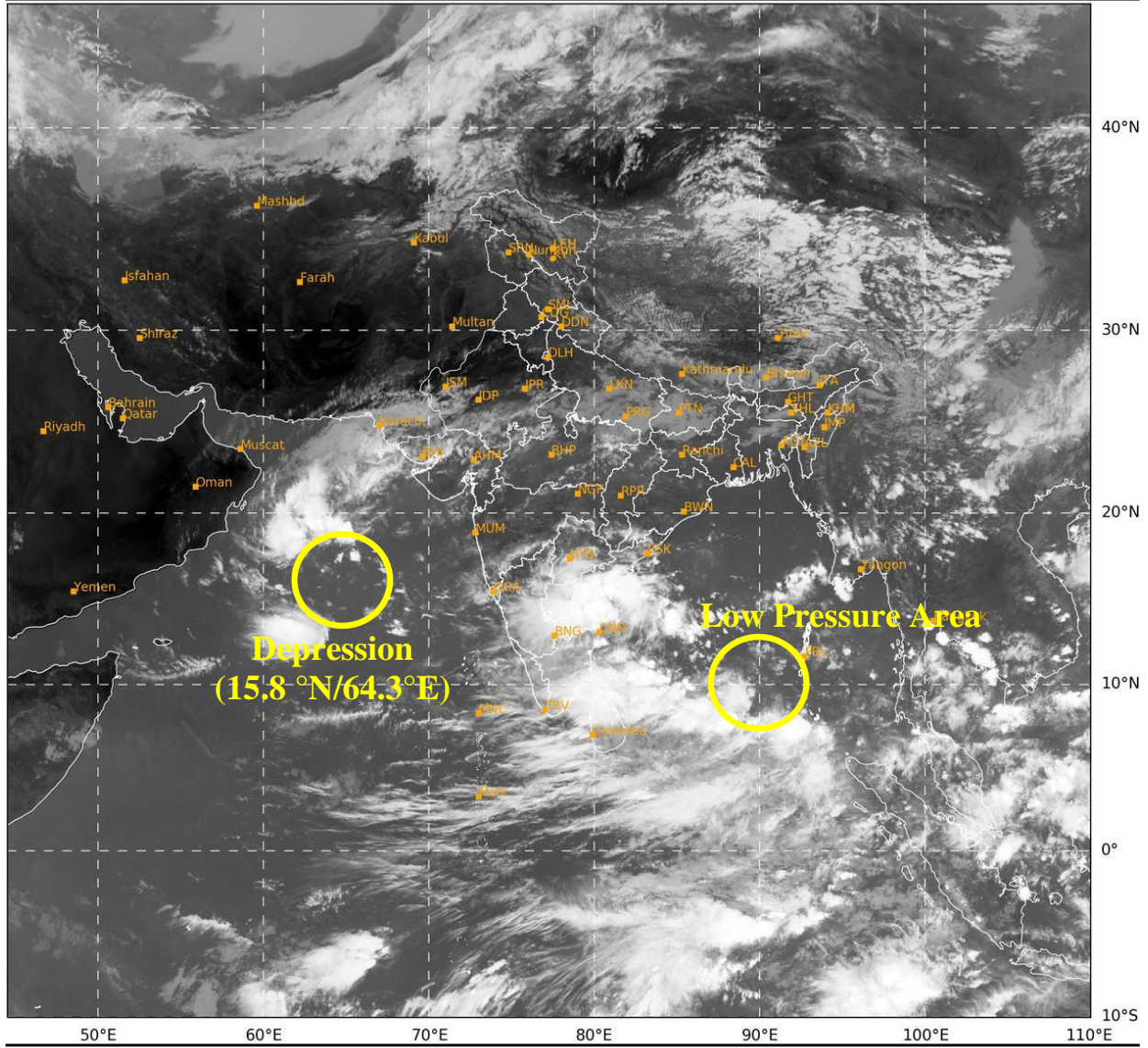
**Next bulletin will be issued at 1430 hours IST of today, the 14<sup>th</sup> October, 2024.**

**(Dr. Ananda Kumar Das)**  
**Scientist-F, RSMC & IMD, New Delhi**

*Copy to: ACWC Kolkata/ACWC Mumbai/ACWC Chennai/CWC Ahmedabad/CWC Bhubaneswar/CWC Vishakhapatnam CWC, Thiruvananthapuram/ MC, Goa*

SAT : INSAT-3DR IMG  
IMG\_TIR1 10.8 um  
L1C Mercator

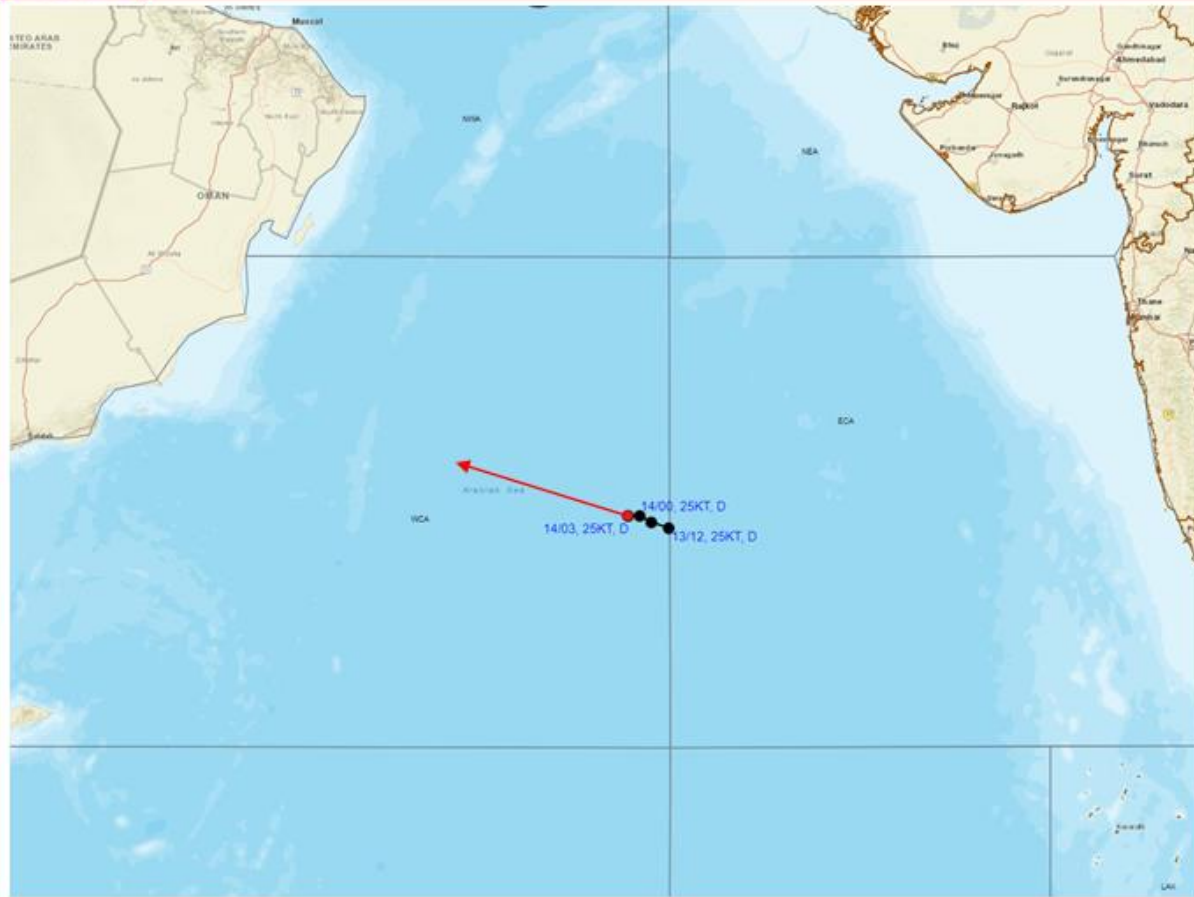
14-10-2024/(0645 to 0712) GMT  
14-10-2024/(1215 to 1242) IST




266 949  
IMD, DELHI



**OBSERVED AND FORECAST TRACK OF DEPRESSION OVER CENTRAL ARABIAN SEA  
BASED ON 0300 UTC (0830 Hrs IST) OF 14<sup>th</sup> OCTOBER, 2024**

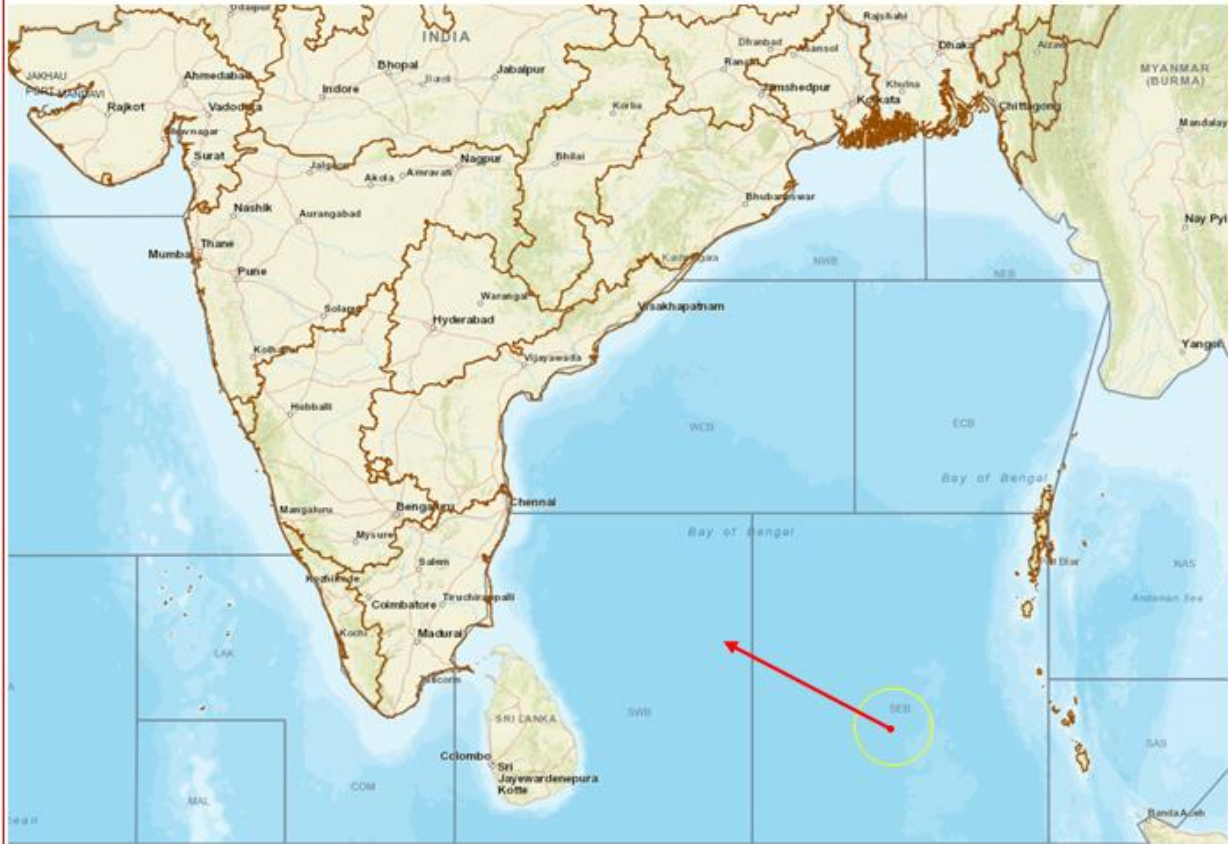


DATE/TIME IN UTC  
IST=UTC + 0530  
L: LOW PRESSURE AREA  
WML: WELL MARKED LOW PRESSURE AREA  
D: DEPRESSION (17-27 KT)  
DD: DEEP DEPRESSION (28-33 KT)  
CS: CYCLONIC STORM (34-47 KT)  
SCS: SEVERE CYCLONIC STORM (48-63KT)  
VSCS: VERY SEVERE CYCLONIC STORM (64-89 KT)  
ESCS: EXTREMELY SEVERE CYCLONIC STORM (90-119 KT)  
SuCS: SUPER CYCLONIC STORM ( $\geq$  120 KT)




-  LESS THAN 34 KT
-  34-47 KT
-   $\geq$  48 KT
-  OBSERVED TRACK
-  FORECAST TRACK
-  CONE OF UNCERTAINTY

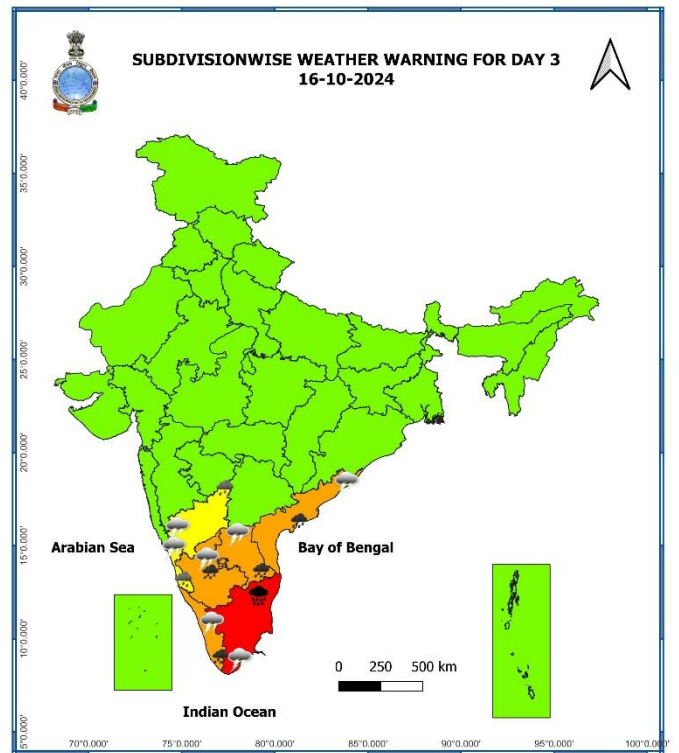
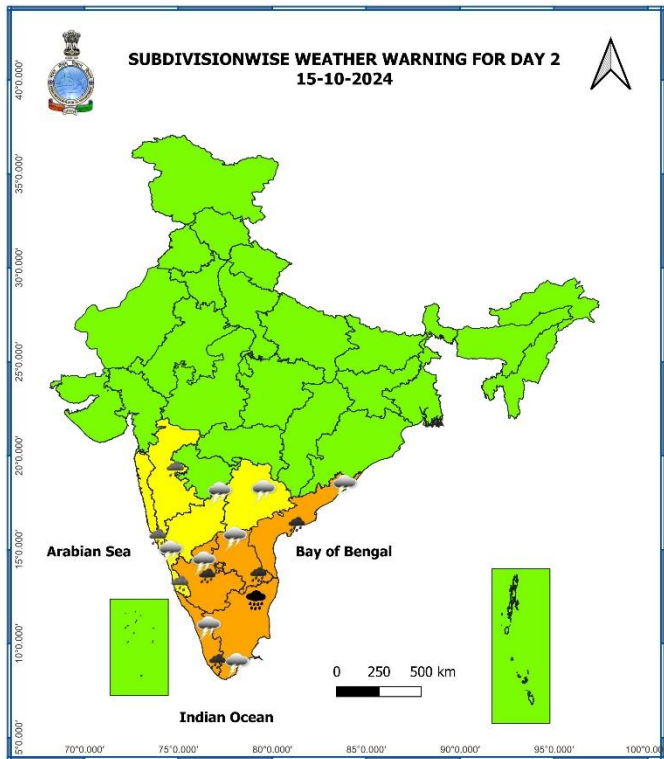
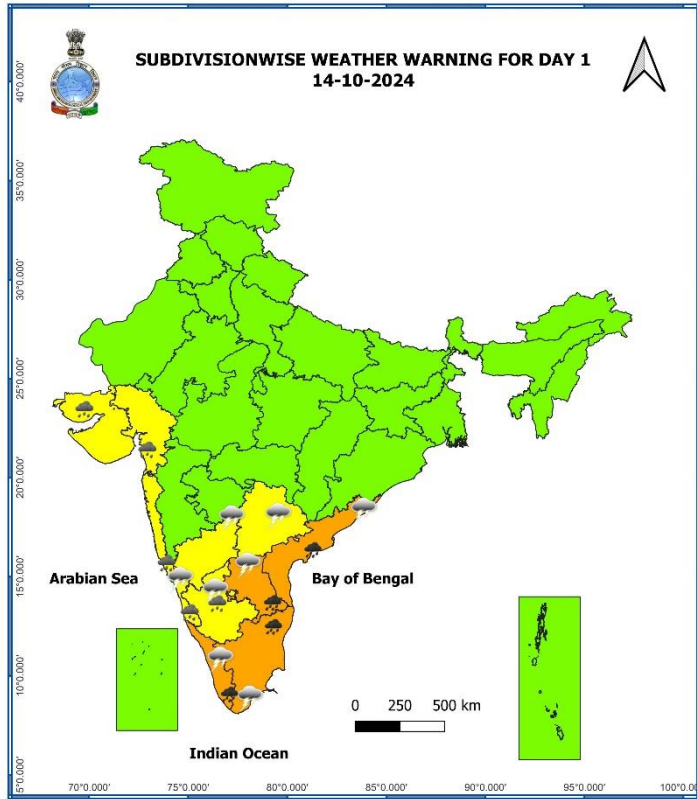


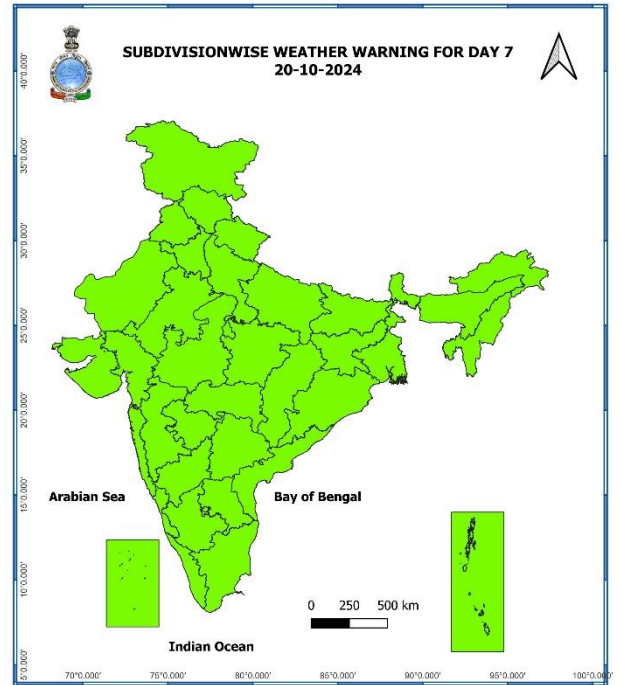
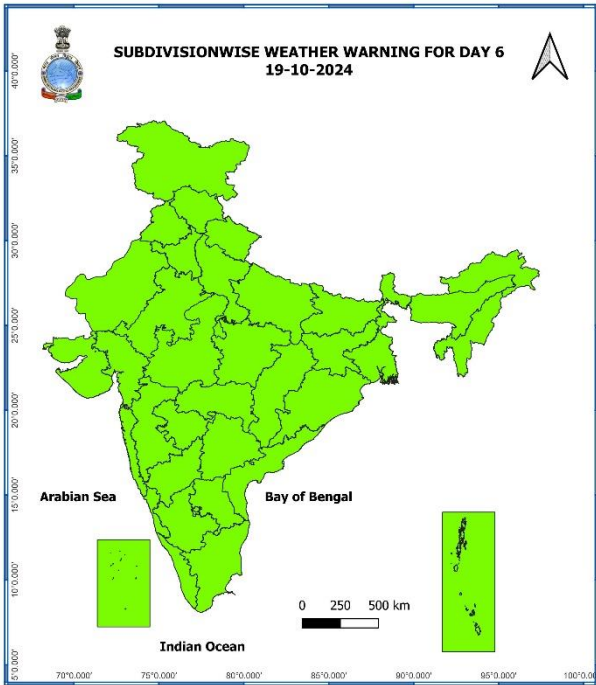
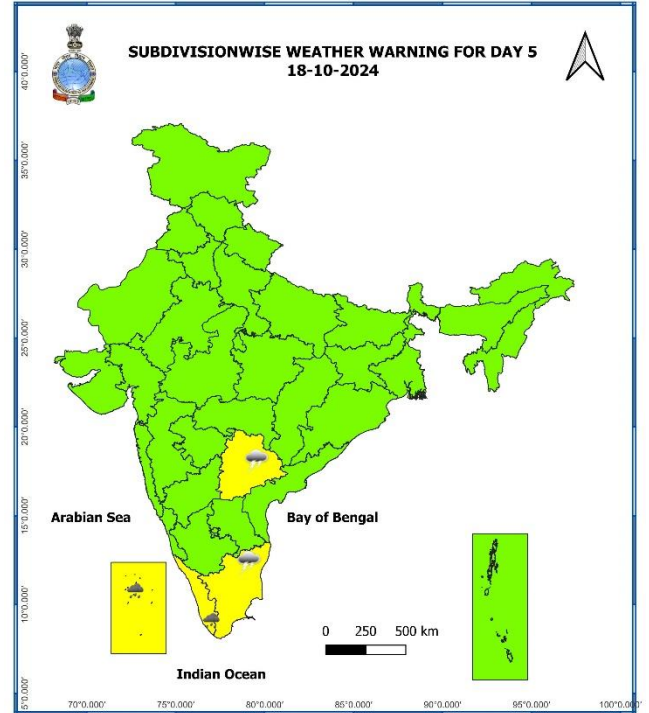
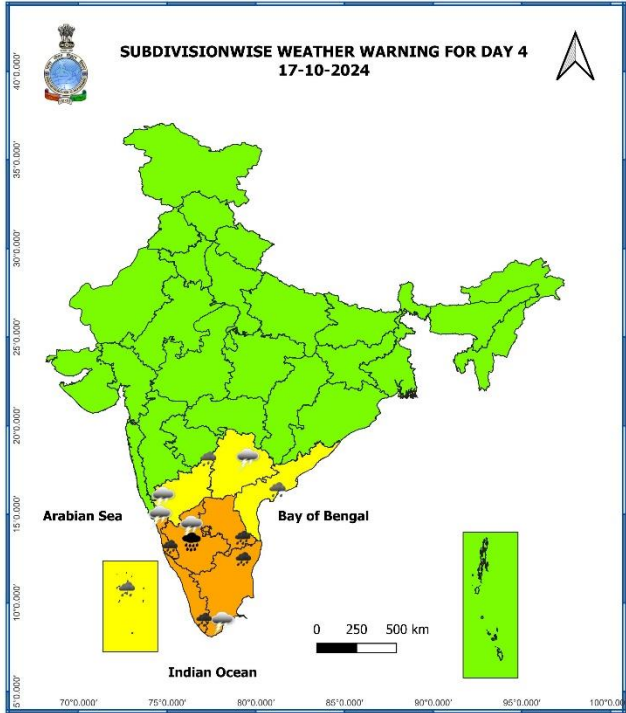
**LOW PRESSURE AREA OVER SOUTHEAST BAY OF BENGAL BASED ON 0300 UTC (0830 Hrs IST) OF 14<sup>th</sup> OCTOBER, 2024**



DATE/TIME IN UTC  
IST=UTC + 0530  
L: LOW PRESSURE AREA  
WML: WELL MARKED LOW PRESSURE AREA  
D: DEPRESSION (17-27 KT)  
DD: DEEP DEPRESSION (28-33 KT)  
CS: CYCLONIC STORM (34-47 KT)  
SCS: SEVERE CYCLONIC STORM (48-63KT)  
VSCS: VERY SEVERE CYCLONIC STORM (64-89 KT)  
ESCS: EXTREMELY SEVERE CYCLONIC STORM (90-119 KT)  
SuCS: SUPER CYCLONIC STORM (≥ 120 KT)

-  LESS THAN 34 KT
-  34-47 KT
-  ≥ 48 KT
-  OBSERVED TRACK
-  FORECAST TRACK
-  CONE OF UNCERTAINTY





- Action may be taken based on **ORANGE AND RED** COLOUR warnings.
- Vulnerable regions likely urban and hilly areas action may be initiated for heavy rainfall warning.
- As the lead period increases forecast accuracy decreases.



## Fishermen Warning Graphics

